



Bailey Bridge Construction Platform Temporary Steel Bridge

Basic Information

- Place of Origin: China
- Brand Name: Tongkai
- Certification: ISO9001, EN1090, ISO3834
- Model Number: TK100
- Minimum Order Quantity: 1set
- Price: FOB1000USD
- Packaging Details: Nude Packing ,Steel case
- Delivery Time: 15days
- Payment Terms: L/C, T/T, Western Union, MoneyGram
- Supply Ability: 500T/M



Product Specification

- Material: S460J0, S355JR, S235JR
- Single Span: 9~36m
- Net Width: 4m~20m
- Load: 50T ~250T
- Color: Green, Grey, Orange, Red
- Application: Construction
- Highlight: **Temporary Steel Bailey Bridge, Construction Platform Temporary Steel bridge, Construction Platform Bailey Bridge**



Our Product Introduction

for more products please visit us on tkbridges.com

Product Description

Bailey Bridge Deck Type Bridge Compact 100 Large wide Construction Platform Temporary

Brief Introduction

Deck-type panel bridges are normally two lanes, class 50 or higher bridges assembled to replace single-lane bridges. **A deck-type panel bridge has the following advantages over a through-type bridge :**

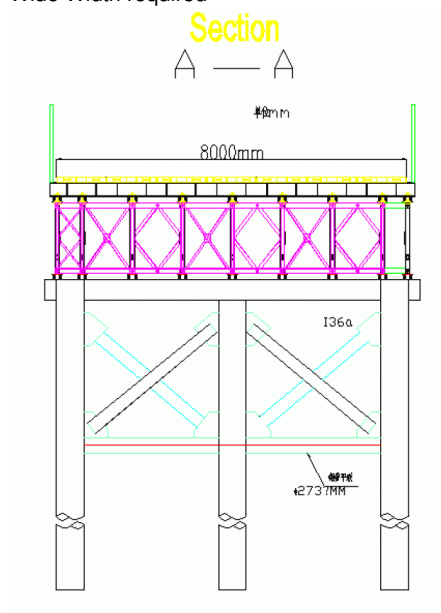
- Roadway can be wider for passage of extra-wide vehicles.
- Deck-type assembly allows greater side overhang of vehicles.
- A lighter decking system can be used when the roadway is supported by trusses.
- With some sloping banks, the span between abutments is shorter than in a through-type bridge, because bearings are set 5 feet (1.5 meters) below road level.
- Demolished piers need not be built Up to the level of the roadway.
- There are no overhead restrictions.

A deck-type panel bridge has the following disadvantages:

- Excavation at abutments may be necessary because bearings are 5 feet (1.5 meters) below the roadway.
- It is more difficult to launch.
- It must be lowered 5 feet (1.5 meters) onto the bearings.
- Waterway clearance is decreased.

APPLICATION

- Temporary bridging
- Rural infrastructure project
- Construction Platform
- Heavy load
- Wide Width required



Zhenjiang Tongkai Mechanical Engineering Co.,Ltd.



008613813883197



andy@tkmachinery.com



tkbridges.com

Room 202, Jintai Building, Runxing Road, High tech Zone, Zhenjiang Jiangsu, China