

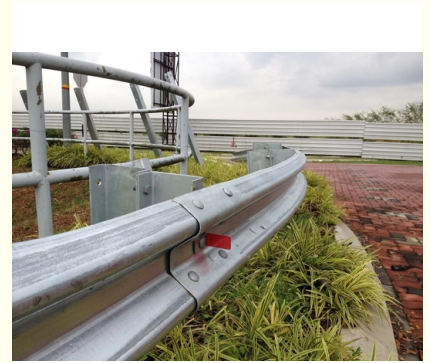


## Highway Guardrail M180 Proven And Trusted Guardrail For Highway Protection

### Our Product Introduction

#### Basic Information

- Place of Origin: China
- Brand Name: Tongkai
- Certification: ISO, EN1090, SGS,
- Model Number: M180
- Minimum Order Quantity: 100set
- Price: 500USD~1200USD
- Packaging Details: nude packing
- Delivery Time: 15days
- Payment Terms: L/C, T/T
- Supply Ability: 10000t/m



#### Product Specification

- Thickness: 2.7mm
- Zinc Coating: 550g/m<sup>2</sup>, 1100g/m<sup>2</sup>
- End Treatment: Fish Tail Or Bull Nose
- Shape: W-beam
- Application: Highway Safety Barrier
- Connection Type: Bolted Or Spliced
- Material: Galvanized Steel
- Length: 4320mm
- Standard: AASHTO M180
- Installation Method: Post And Block Or Post And Spacer
- Surface Treatment: Hot-dip Galvanized
- Width: 310mm
- Section Properties: Moment Of Inertia: 13.4 Cm<sup>4</sup>/m, Section



#### More Images



## Product Description

### Product Description:

The M180 Road Safety Barrier is designed to meet the highest standards of road safety, providing an effective barrier between vehicles and potential hazards. It's an essential component for any road or highway project, providing a reliable and cost-effective solution for road safety.

The M180 Road Safety Barrier is easy to install and maintain, with a simple design that's been proven effective over decades of use. It's designed to withstand the toughest conditions, providing reliable protection even in extreme weather and environmental conditions. The galvanized highway guardrail is designed to absorb the impact of a collision, helping to prevent serious injuries and fatalities. It's designed to redirect vehicles back onto the road, minimizing the risk of secondary accidents and providing maximum protection for drivers and passengers.

The M180 Road Safety Barrier is available in a variety of sizes and configurations to meet the specific needs of your project. Whether you're looking for a standard barrier or a customized solution, the M180 Road Safety Barrier provides the flexibility and versatility you need.

Overall, the M180 Road Safety Barrier is an essential component for any road or highway project, providing reliable and cost-effective protection for drivers and passengers. With its durable construction and proven effectiveness, it's the ideal choice for any road protection guardrails project.

### Features:

Product Name: Highway Guardrail M180

Material: Steel

Type: W-beam Guardrails

Application: Road Protection Guardrails

Standard: AASHTO M180, EN1317

Corrosion Resistance: Galvanized or Powder Coated

Length: 3.2m or Customized

Thickness: 2.5mm - 4.0mm

End Treatment: Bolted or Welded

Installation: Easy to Install

### Technical Parameters:

Product Attribute	Technical Parameter
Product Name	Highway Guardrail M180
Material	Steel Q235/Q345
Surface Treatment	Galvanized or Powder Coated
Standard	GB/T 31439.1-2015
Length	4320mm or customized
Height	310mm or 510mm
Thickness	3mm or 4mm
Application	Road Protection Guardrails, Roadside Safety Barriers, Roadside Safety Barriers

### Applications:

The M180 W-beam Guardrail System is ideal for use in a variety of different applications and scenarios. For example, it can be used on highways, rural roads, and urban streets to provide a physical barrier between the roadway and adjacent areas. The guardrails can also be used to prevent vehicles from colliding with trees, utility poles, and other fixed objects.

In addition to its primary function as a safety barrier, the M180 W-beam Guardrail System can also be used for aesthetic purposes, providing a visually pleasing appearance to any roadway. The guardrails can be painted in a variety of colors to match the surrounding environment, and they can be designed to blend in with the natural landscape.

The M180 W-beam Guardrail System is a cost-effective solution for road safety. The system is easy to install and requires minimal maintenance, making it an ideal choice for budget-conscious municipalities and transportation departments.

The M180 W-beam Guardrail System is also highly customizable. It can be designed to meet the specific needs of any roadway or project, including height, length, and spacing requirements. The guardrails can also be designed to accommodate a variety of different types of vehicles, including cars, trucks, and motorcycles.

Overall, the M180 W-beam Guardrail System is an essential piece of equipment for any transportation department or municipality looking to improve road safety. Its durability, versatility, and cost-effectiveness make it an ideal choice for any roadway or project.

Support and Services:

The Highway Guardrail M180 is a crash barrier system that is designed to provide efficient and effective protection for drivers and passengers on highways. Our company provides technical support and services to ensure that our product meets the highest standards of safety and durability.

Our technical support team is available to answer any questions and provide assistance with installation, maintenance, and repair of the Highway Guardrail M180. We also offer training and education to help our customers understand the proper procedures for installing and maintaining our product.

In addition, we provide a range of services to ensure that our product remains in optimal condition throughout its lifespan. These services include regular inspections, repairs, and replacements of damaged or worn components. We also offer emergency repair services to ensure that our customers are able to quickly and safely restore their highway guardrail systems in the event of an accident or other unexpected event.

At our company, we are committed to providing the highest level of technical support and services to our customers to ensure their safety and satisfaction with our products. Contact us today to learn more about our Highway Guardrail M180 and how we can assist you with your highway safety needs.

Packing and Shipping:

**Product Packaging:**  
The Highway Guardrail M180 product will be packaged in bundles of 25 pieces each, wrapped with plastic and securely strapped together. Each bundle will be labeled with product specifications and handling instructions.

**Shipping:**  
The Highway Guardrail M180 product will be shipped via a flatbed truck or a container truck. The delivery will be arranged by the supplier and the shipping cost will be included in the total price of the product. The estimated delivery time will be provided upon order confirmation.

FAQ:

A: The M180 Highway Guardrail is made of high-quality steel and coated with a zinc layer to prevent corrosion.

Q: What is the standard length of a section of M180 Highway Guardrail?

A: The standard length of a section of M180 Highway Guardrail is 4 meters.

Q: What is the height of the M180 Highway Guardrail?

A: The height of the M180 Highway Guardrail is 750mm.

Q: What is the weight of a section of M180 Highway Guardrail?

A: The weight of a section of M180 Highway Guardrail is approximately 50kg.

Q: What is the purpose of the M180 Highway Guardrail?

A: The purpose of the M180 Highway Guardrail is to provide a physical barrier between vehicles and roadside hazards, such as steep embankments, trees, and other obstacles, to minimize the risk of injury and damage in the event of a collision.

美标AASHTO-M180 技术标准  
USA AASHTO M180 technical standard

ROADWAY GUARDRAIL PRODUCT FEATURES APPLICATION

- 1. To provide safety protection for vehicles moving in the opposite direction to avoid collisions.
- 2. To provide safety protection for vehicles moving in the same direction to avoid collisions.
- 3. To provide safety protection for vehicles moving in the same direction to avoid collisions.
- 4. To provide safety protection for vehicles moving in the same direction to avoid collisions.

SPECIFICATION AND TECHNICAL DATA

TYPE	SECTION LENGTH (MM)	SECTION WEIGHT (KG)	SECTION HEIGHT (MM)	SECTION WIDTH (MM)
1	4000	50	750	1000
2	4000	50	750	1000

SECTION THROUGH-BEAM

RAIL SECTION

BEAM PLATE, SPACER PLATE, SPACER ROD & NUT, ISOLATION STOP

美标AASHTO-M180 技术标准  
USA AASHTO M180 technical standard

ROADWAY GUARDRAIL PRODUCT FEATURES APPLICATION

- 1. To provide safety protection for vehicles moving in the opposite direction to avoid collisions.
- 2. To provide safety protection for vehicles moving in the same direction to avoid collisions.
- 3. To provide safety protection for vehicles moving in the same direction to avoid collisions.
- 4. To provide safety protection for vehicles moving in the same direction to avoid collisions.

SPECIFICATION AND TECHNICAL DATA

TYPE	SECTION LENGTH (MM)	SECTION WEIGHT (KG)	SECTION HEIGHT (MM)	SECTION WIDTH (MM)
1	4000	50	750	1000
2	4000	50	750	1000

SECTION THROUGH-BEAM

RAIL SECTION

BEAM PLATE, SPACER PLATE, SPACER ROD & NUT, ISOLATION STOP

U型立柱展示  
The U post display

安装分解图/Installation Decomposition Diagram

U型立柱配螺母/U Post Matching Guardrail

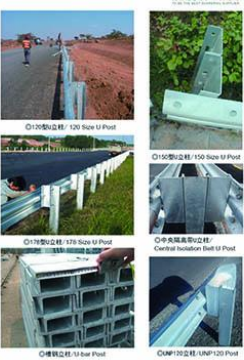
U型立柱配螺母/U Post Matching Guardrail

U型立柱配螺母/U Post Matching Guardrail

U型立柱配螺母/U Post Matching Guardrail

U型立柱配螺母/U Post Matching Guardrail

U型立柱配螺母/U Post Matching Guardrail



道机交捷系统



**Zhenjiang Tongkai Mechanical Engineering Co.,Ltd.**



008613813883197



andy@tkmachinery.com



tkbridges.com

Room 202, Jintai Building, Runxing Road, High tech Zone, Zhenjiang Jiangsu, China