



Steel Bailey Bridge Double Lane 7.35m

Our Product Introduction

Basic Information

- Place of Origin: China
- Brand Name: Tongkai
- Certification: ISO, EN1090, SGS, CIDB
- Model Number: ZB200/TK200/Compact 200
- Minimum Order Quantity: 1 set
- Price: 1500USD ~2000USD/ton
- Packaging Details: Nude and Steel case
- Delivery Time: 15~45days
- Payment Terms: L/C, T/T, Western Union, MoneyGram
- Supply Ability: 3000/month

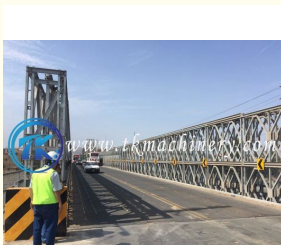


Product Specification

- Surface Finish: Painted Or Galvanized
- Ramp: 6m, 9m, 12m
- Deck: Anti Skid
- Load: HA, HB, HA+20HB AASHTO HL-93, HS35-44
- Lane: Single Lane 3.15m~4.2m Double Lane 7.35m, Three Lane 10.5m
- Net Width: Double Lane 7.35m
- Footway: 1m, 1.2m, 1.5m
- Span: Upto 60.96m
- Highlight: Steel Bailey Bridge, 7.35m Bailey Bridge, Zb200 acrow bailey bridge



More Images



Product Description

Product Description:

Lanes: The Bailey Bridge comes in various lane configurations, including single-lane (3.15m~4.2m), double-lane (7.35m), and three-lane (10.5m). This makes it adaptable to different traffic volumes and road widths.

Color: The Bailey Bridge is available in different colors, including green, grey, orange, and red. This allows it to blend in with the environment or stand out as a visible landmark.

Ramp: The Bailey Bridge can be equipped with ramps on both ends to provide easy access and egress. The ramps come in different lengths, such as 6m, 9m, and 12m, to accommodate different terrain profiles.

Load: The Bailey Bridge is designed to support various load capacity requirements, such as HA, HB, HA+20HB, AASHTO HL-93, and HS35-44. This means it can handle heavy vehicles, such as trucks, buses, and tanks.

Net Width: The Bailey Bridge has a net width of 3.15m, 3.6m, 4.2m and 7.35m, depending on the lane configuration. This provides enough space for vehicles to pass each other safely.

The Bailey Bridge is a proven solution that has been used in many countries and applications. It is easy to transport, install, and remove, which makes it ideal for emergency situations or temporary worksites. It is also durable and low-maintenance, which makes it cost-effective for long-term installations. Contact us today to learn more about how the Bailey Bridge can meet your bridging needs.

Features:

Product Name: Bailey Bridge

Color: Green, Grey, Orange, Red

Span: upto 60.96m

Ramp: 6m, 9m, 12m

Deck: Anti skid aggregate

Material: S460J0, S355JR, S355J0, Gr65, Gr50

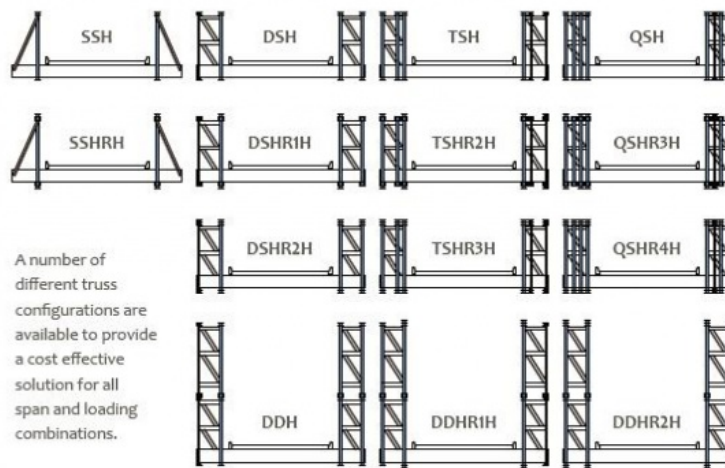
Product Type: Steel Truss Bridge

Usage: Military Bridge System, Emergency Bridge

Technical Parameters:

Technical Parameters	Values
Product Name	Compact Panel Bridge, Acrow Bridge, Mabey Bridge
Color	Green, Grey, Orange, Red
Load	HA, HB, HA+20HB, AASHTO HL-93, HS35-44
Footway	1m, 1.2m, 1.5m
Span	up to 60.96m
Ramp	6m, 9m, 12m
Deck	Anti skid
Material	S460J0, S355JR, S355J0, Gr65, Gr50
Lane	Single lane 3.15m~4.2m, Double Lane 7.35m, three lane 10.5m
Surface Finish	Painted or Galvanized
Net Width	3.15m, 3.6m, 4.2m, 7.35m

Bridge Truss Constructions



Applications:

The Tongkai ZB200/TK200/Compact 200 Bailey Bridge is a versatile, panel bridge that can be used for a variety of applications. It is a temporary steel bridge that is easy to assemble and disassemble, making it ideal for use in emergencies and disaster relief efforts. The Bailey Bridge has been used in military applications for decades, and is trusted for its durability and reliability.

The Tongkai Bailey Bridge is certified by ISO, EN1090, SGS, and CIDB, ensuring that it meets international quality standards. It is made in China and has a minimum order quantity of 1 set. The price of the bridge ranges from 1500USD to 2000USD per ton, and payment can be made through L/C, T/T, Western Union, or MoneyGram. Tongkai is able to supply up to 3000 bridges per month, with a delivery time of 15 to 45 days. The bridge is packaged in a nude or steel case.

The Bailey Bridge can span up to 81 meters and has an anti-skid aggregate deck that provides excellent traction. It is available in single lane widths of 3.15m to 4.2m, double lane widths of 7.35m, and three lane widths of 10.5m. The bridge can be painted or galvanized for added durability. The Tongkai Bailey Bridge has a net width of 3.15m, 3.6m, or 4m, depending on the lane configuration.

The Tongkai Bailey Bridge is suitable for a variety of applications, including:

Emergency Response: The Bailey Bridge can be quickly and easily assembled to provide temporary access in emergency situations, such as natural disasters or bridge failures.

Construction Sites: The Bailey Bridge can be used to provide temporary access to construction sites, allowing vehicles and equipment to cross over rivers, valleys, or other obstacles.

Military Applications: The Bailey Bridge has been used by militaries around the world for decades. It can be used to quickly establish temporary bridges in combat zones or for other military applications.

Rural Infrastructure: The Bailey Bridge can be used to provide temporary or permanent access to rural communities, allowing them to connect with the broader transportation network.

The Tongkai Bailey Bridge is a reliable, high-quality product that offers flexibility and versatility in a variety of applications. With its easy assembly and disassembly, it is an ideal solution for temporary access needs.

Support and Services:

The Bailey Bridge is a modular steel panel bridge system designed for use in emergency situations, as well as for longer-term permanent applications. Our product technical support and services include:

- Detailed technical documentation and manuals for installation, maintenance, and repair
- On-site technical support and training for installation and maintenance
- Customized design services to meet specific project requirements
- Quality control and assurance through rigorous testing and inspection
- Replacement parts and components readily available for quick and easy repairs

Packing and Shipping:

Product Packaging:

Steel components securely packed in wooden crates

Wooden crates are sealed with steel straps

Each crate is labeled with product information and handling instructions

Shipping:

Shipped via sea or land transport

Delivery time varies depending on destination

Shipping and handling fees may apply and are calculated based on distance and weight

FAQ:

Q: What is the brand name of the bridge?

A: The brand name of the bridge is Tongkai.

Q: What are the models available for the bridge?

A: The models available for the bridge are ZB200, TK200 and Compact 200.

Q: What certifications does the bridge have?

A: The bridge has ISO, EN1090, SGS and CIDB certifications.

Q: What is the minimum order quantity for the bridge?
A: The minimum order quantity for the bridge is 1 set.
Q: What is the price range for the bridge?
A: The price range for the bridge is between 1500USD to 2000USD per ton.
Q: What are the payment terms for the bridge?
A: The payment terms for the bridge are L/C, T/T, Western Union, and MoneyGram.
Q: What is the supply ability of the bridge?
A: The supply ability of the bridge is 3000 units per month.
Q: What is the delivery time for the bridge?
A: The delivery time for the bridge is between 15 to 45 days.
Q: What are the packaging details for the bridge?
A: The packaging details for the bridge are nude and steel case.



Zhenjiang Tongkai Mechanical Engineering Co.,Ltd.



008613813883197



andy@tkmachinery.com



tkbridges.com

Room 202, Jintai Building, Runxing Road, High tech Zone, Zhenjiang Jiangsu, China